

CDI P/N: 551-34PV Pressure/Vacuum Tester

NOTICE: This unit comes with a threaded filler nozzle which is installed fits most Chrysler, Evinrude, Force, Johnson, Mariner and Mercury outboards. The adapters for Suzuki, Tohatsu and Yamaha lower units are included.

WARNING: DO NOT ALLOW ANY PETROLEUM BASED OIL TO ENTER THE PRESSURE/VACUUM TESTER AS THE INTERNAL SEALS CAN BE DAMAGED. ANY UNIT DAMAGED DUE TO PETROLEUM BASED OIL ENTERING THE PRESSURE/VACUUM TESTER WILL NOT BE COVERED UNDER WARRANTY.

1. After draining the lower unit as you normally would, install the clear hose adapter into the upper oil hole and the drain plug into the lower hole.
2. Pressurize to 15 PSI or pull a vacuum to 15 inches of mercury as needed to check for leaks.



In addition to the **551-34HA** Hose Assembly, the following adapters are included.

551-334M Metric Adapter (used with most imported engines).

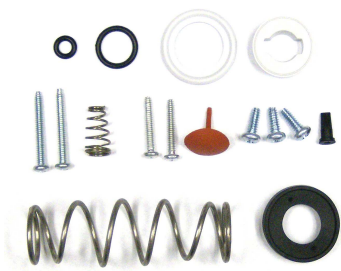
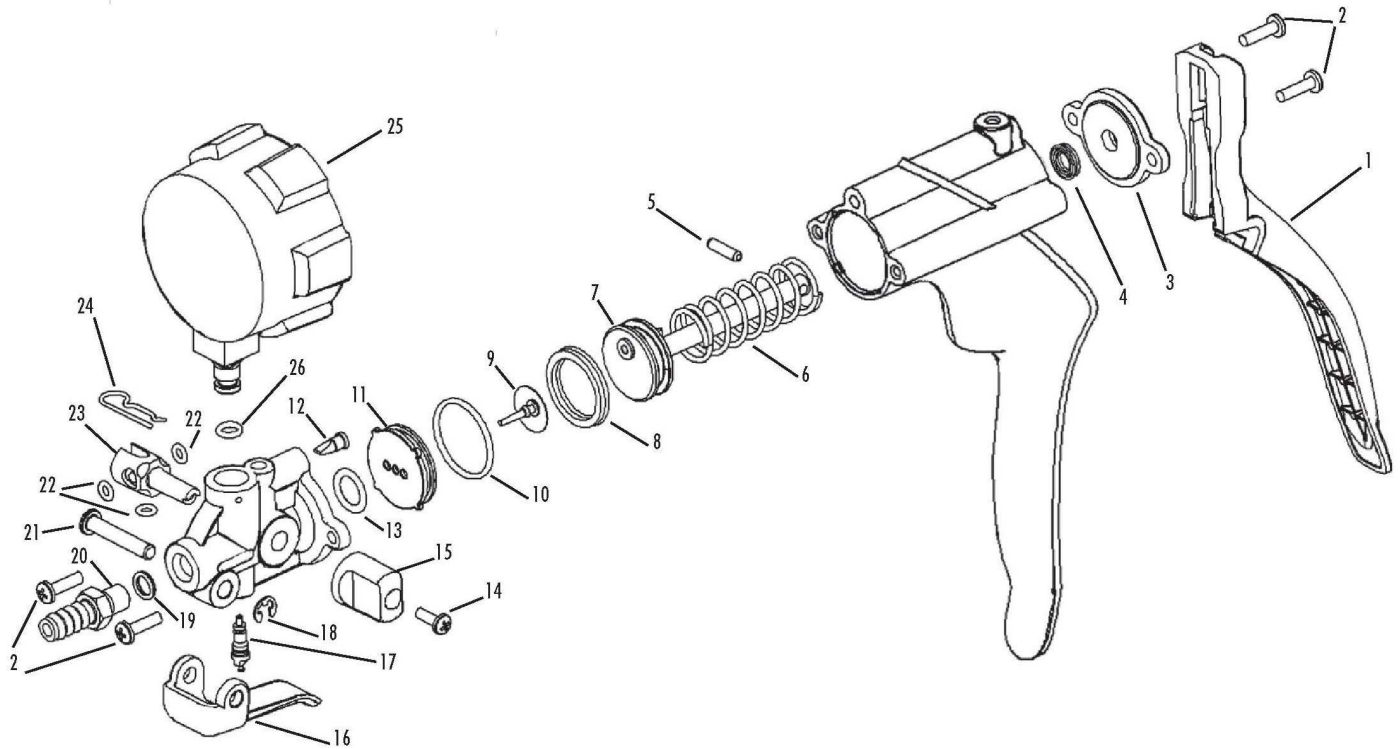
551-334S Suzuki Adapter (used with most Suzuki engines).

Service Tips

1. If the pressure/vacuum tester requires lubrication, use vegetable based oil (Crisco, Mazola, etc). **DO NOT USE ANY TYPE OF PENETRATING OIL OR AEROSOL SPRAY LUBRICANTS.**
2. If the pressure/vacuum tester fails to hold pressure, check the hose clamps where the hose is attached to the adapter and the pressure/vacuum tester. If the hose slips when rotated, you may need to replace the clamps if they cannot be tightened further.

NOTE: The pressure/vacuum tester is warranted for a period of 1 year from date of purchase. Any unit considered defective must be returned to us, along with a copy of the original bill of sale for warranty consideration.

EXPLODED VIEW 551-34PV



551-34R1 Repair Kit



551-34G1 Replacement Gauge