



SEASTAR
SOLUTIONS

640 North Lewis Road
Limerick, PA 19468 USA
610-495-7011
www.seastarsolutions.com

Installation Instructions DUAL STATION EXCHANGER, GEAR UNIT.

READ THESE INSTRUCTIONS BEFORE COMMENCING THE INSTALLATION.

This all mechanical unit combines the actions from dual stations to single output to the gearbox.

Part No.
207575

CABLE CONNECTION

When used with Single Lever Controls to operate GEAR, mount the cables in positions marked "B" on the chassis as shown in figures 1 & 3.

The unit can be mounted in any position i.e. horizontally, vertically etc.

Position the unit so as to give the absolute minimum number of cable bends (minimum bend radius 200mm.) throughout the entire system.

It is advisable to secure cables on route.

1. Mount the unit using the 3 holes 6.5 dia. provided in the large flange.
Avoid distortion of the unit when securing.
2. Set control heads in neutral position, (Control heads see separate instructions)
route cables to unit.
Remove split pins, strap and rollers figure 1.
Secure cable hubs to unit using plastic cable clamps, pan head M5 screws and nuts provided, in position "B" figure 1 and as shown in figure 2.
Cables to pass behind the selector plate.
3. Lock the input beam using two 5 mm dia. pins (not included) in the neutral (central) position as shown in figure 1, enter pins from the rear of the unit.
Fit terminal eye end to cable rod end so as to equalize the lost motion.
Connect cables to input beam and replace rollers, strap and secure with split pins.

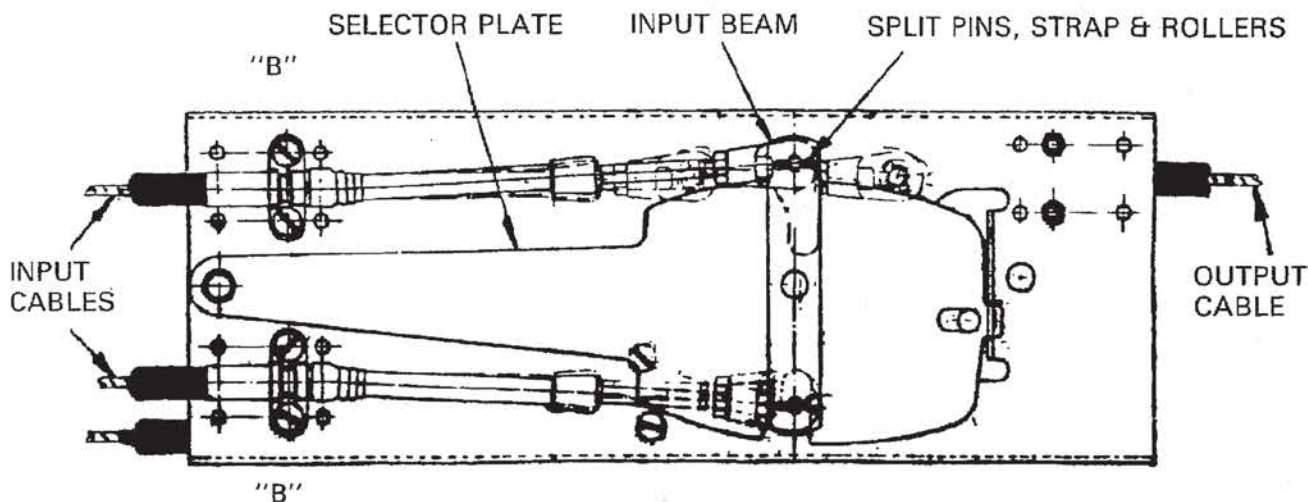


FIGURE 1.

FRONT VIEW OF UNIT IN NEUTRAL POSITION

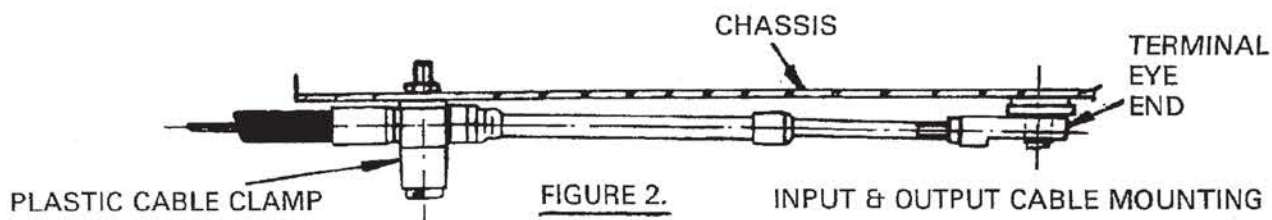


FIGURE 2.

INPUT & OUTPUT CABLE MOUNTING

4. Route output cable to the gear lever.
 With input beam still locked remove split pin from output lever.
 Secure cable hub to unit using plastic cable clamp, pan head M5 screws and nuts provided, in position "B" figure 3 and as shown in figure 2.
 Fit the remaining terminal eye end to cable rod end so as to equalize the cable lost motion.
 Connect cable to output lever, secure with split pin.

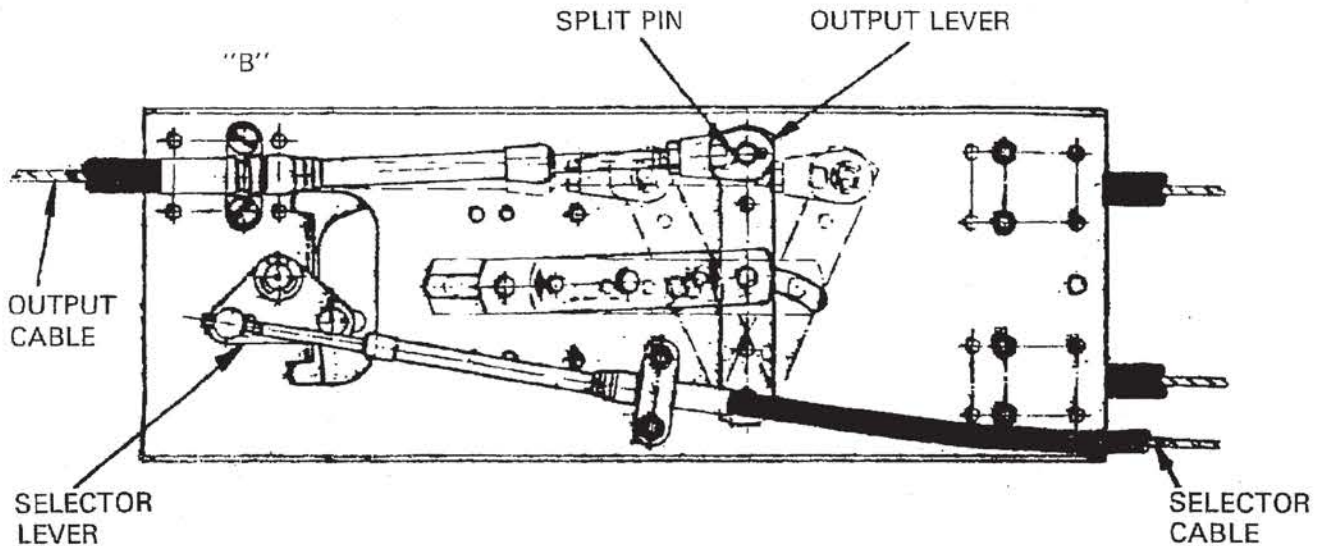


FIGURE 3. REAR VIEW OF UNIT IN NEUTRAL POSITION

5. Route selector cable to unit shown in figure 3. (Selector control head see separate instructions).
 Secure cable hub to unit using plastic cable clamp, countersunk head M5 screws and nuts provided, in position as shown in figures 3 and 4.
 Fit terminal pivot pin to cable rod end so as to equalize the cable lost motion.
 Connect cable to selector lever in position as shown in figure 3 and secure with split pin.
 Check the action of the station selector control.

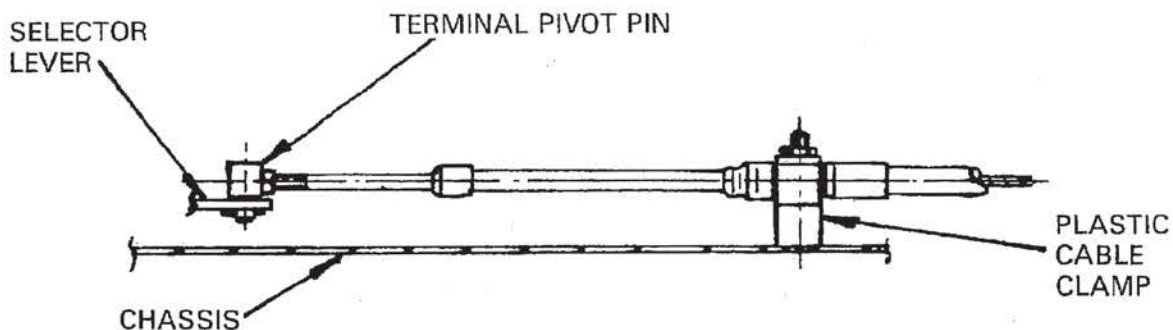


FIGURE 4. SELECTOR LEVER CABLE MOUNTING

6. Connect the output cable to the gear lever as instructed in the separate engine kit installation instructions, taking care to equalize cable lost motion.
7. When both GEAR & THROTTLE UNITS have been installed remove all setting pins and check the function of the system.

